

**ELEKTRO-PLAST**

Electroinstalation products since 35 years



FIND OUT MORE ABOUT PRODUCTS IN OUR WEB SITE  
Mehr Informationen:



[www.elektro-plast.eu](http://www.elektro-plast.eu)

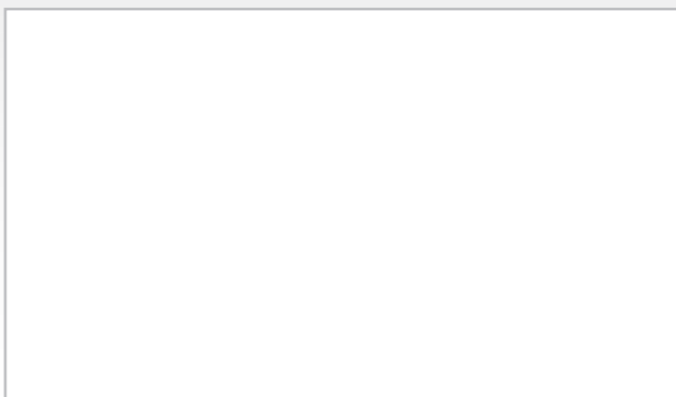
Z.P.H. ELEKTRO-PLAST Sp. z o.o.  
Polen, 62-860 Opatówek  
Ul. Rogatka 14  
Telefon: +48 62 767 06 73  
Telefon/fax: +48 62 767 03 76  
Handy: +48 600 070 411  
biuro@elektro-plast.pl

EXPORT DEPARTMENT  
export@elektro-plast.pl  
+48 668 234 654

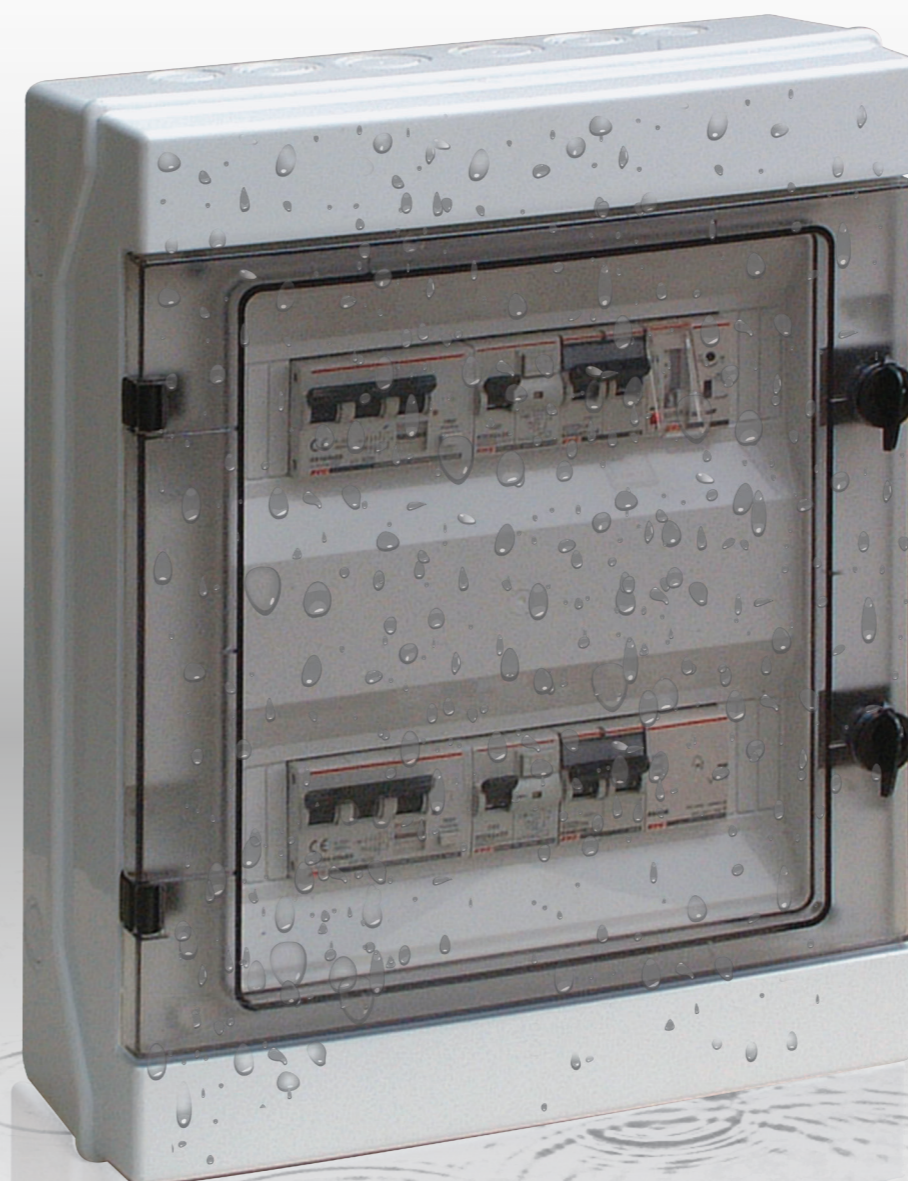


ISO 9001:2008  
www.tuv.com  
ID 9105022278

DISTRIBUTOR:



**ELEKTRO-PLAST**



**NEOseries**



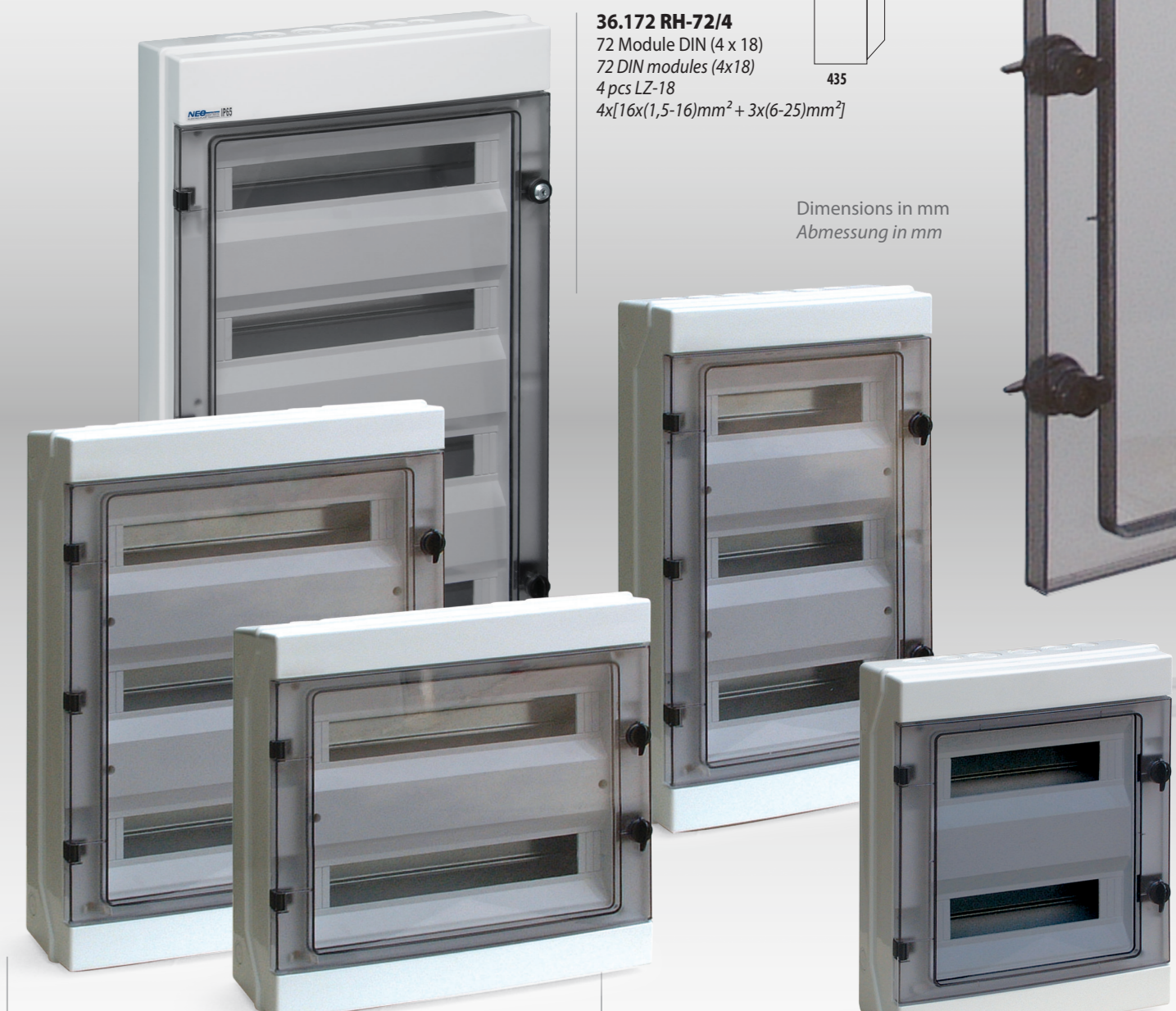
**WALL MOUNTED IP65 DISTRIBUTION BOARDS**

Aufputz Feuchtraumverteiler IP65

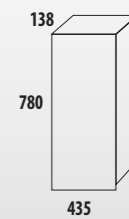
**THE NEW NEOseries**  
Designed to last  
simple and functional with high strength

Neue **NEOseries** perfekt  
Einfach und funktional mit hoher Festigkeit

**RANGE from 4 to 72 DIN modules**  
Verfügbar von 4 bis 72 Module

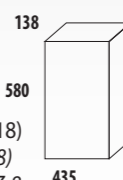


**36.172 RH-72/4**  
72 Module DIN (4 x 18)  
72 DIN modules (4x18)  
4 pcs LZ-18  
4x(16x(1,5-16)mm<sup>2</sup> + 3x(6-25)mm<sup>2</sup>)

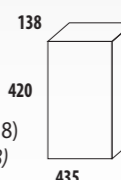


Dimensions in mm  
Abmessung in mm

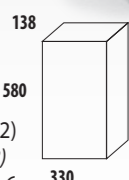
**36.154 RH-54/3**  
54 Module DIN (3 x 18)  
54 DIN modules (3x18)  
2 pcs LZ-18 + 2 pcs LZ-8  
2x(16x(1,5-16)mm<sup>2</sup> + 3x(6-25)mm<sup>2</sup>)  
+2x(9x(1,5-16)mm<sup>2</sup>)



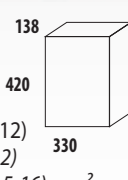
**36.136 RH-36/2**  
36 Module DIN (2 x 18)  
36 DIN modules (2x18)  
2 pcs LZ-18  
2x(16x(1,5-16)mm<sup>2</sup> + 3x(6-25)mm<sup>2</sup>)



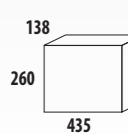
**36.143 RH-36/3**  
36 Module DIN (3 x 12)  
36 DIN modules (3x12)  
2 pcs LZ-12 + 2 pcs LZ-6  
2x(13x(1,5-16)mm<sup>2</sup>)  
+2x(7x(1,5-16)mm<sup>2</sup>)



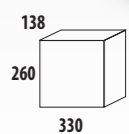
**36.24 RH-24**  
24 Module DIN (2 x 12)  
24 DIN modules (2x12)  
2 pcs LZ-12 2x(11x(1,5-16) mm<sup>2</sup> + 2x(6-25)mm<sup>2</sup>)



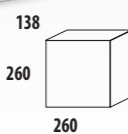
**36.18 RH-18**  
18 Module DIN  
18 DIN modules  
1 pcs LZ-18  
16x(1,5-16)mm<sup>2</sup> + 3x(6-25)mm<sup>2</sup>



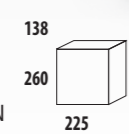
**36.12 RH-12**  
12 Module DIN  
12 DIN modules  
1 pcs LZ-12  
11x(1,5-16)mm<sup>2</sup> + 2x(6-25)mm<sup>2</sup>



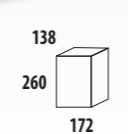
**36.8 RH-8**  
8 Module DIN  
8 DIN modules  
1 pcs LZ-8  
9x(1,5-16)mm<sup>2</sup>



**36.6 RH-6**  
6 Module DIN  
6 DIN modules  
1 pcs LZ-6  
7x(1,5-16)mm<sup>2</sup>



**36.4 RH-4**  
4 Module DIN  
4 DIN modules  
1 pcs LZ-4  
5x(1,5-16)mm<sup>2</sup>



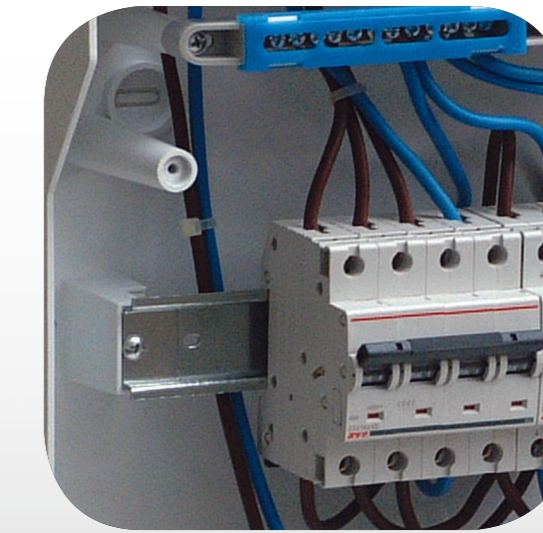
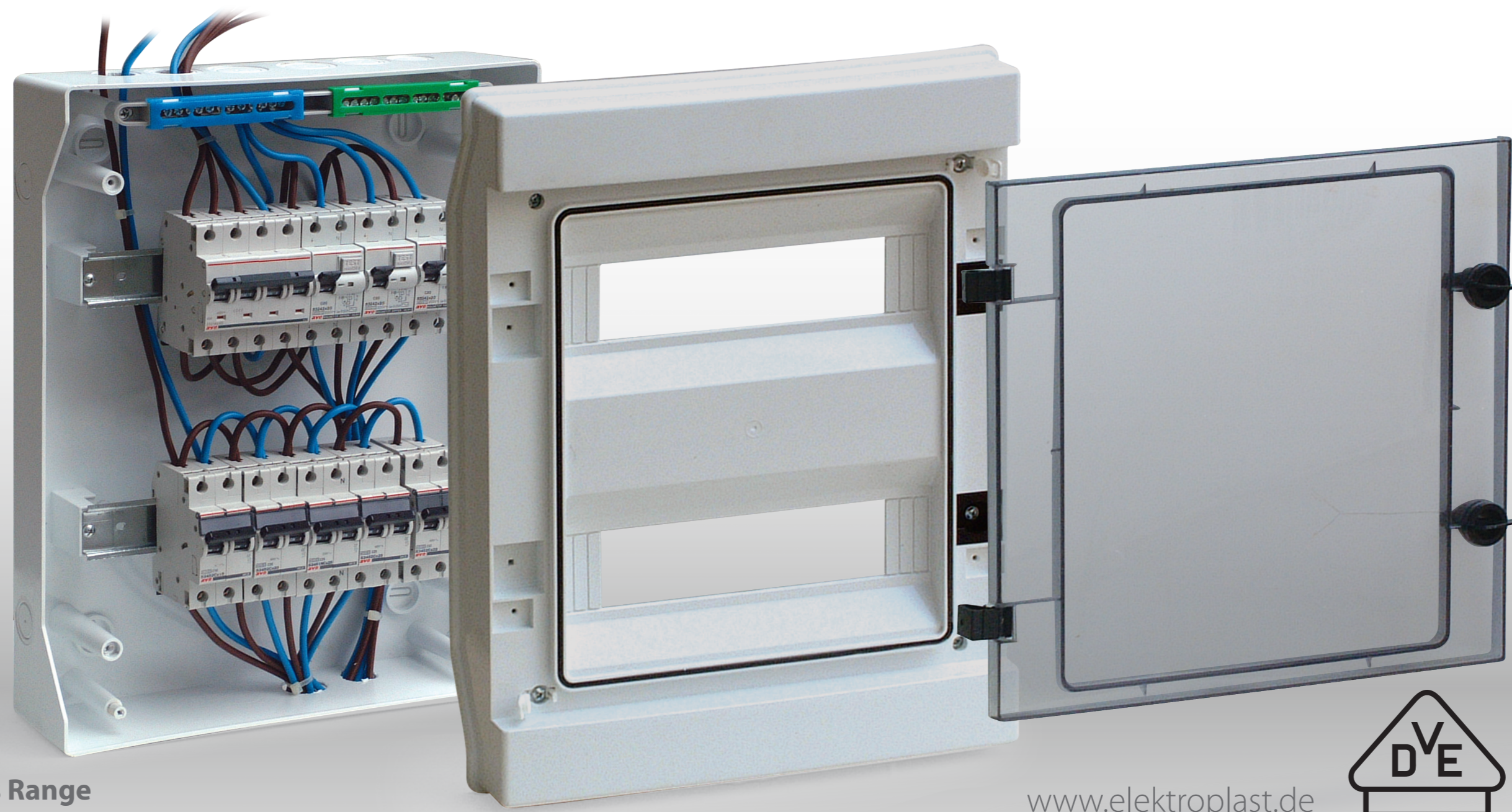


# Technical Features **NEOseries**

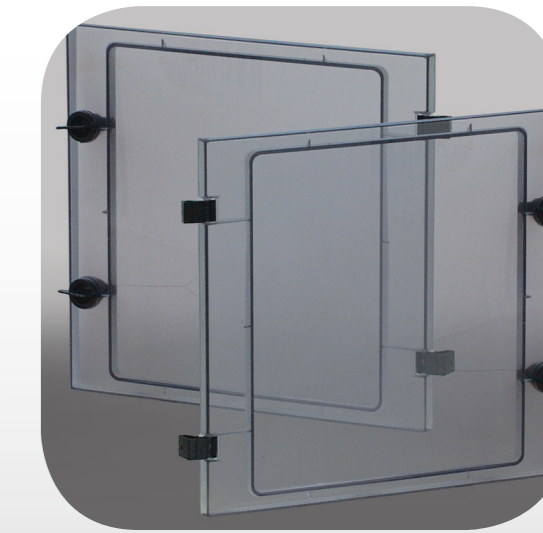
- Un: 230/400 Vac; Uni: 500V; In: 120A
- Material: PC/ABS
- Protection degree: IP 65
- Impact resistance level: IK07
- Resistance to abnormal hert and fire (GWT): 650° C
- Compliance with standards: EN62208 – 2011
- Operating temperature: Minimum – 25°C / Maximum +60°C

## NEOseries Technische Merkmale

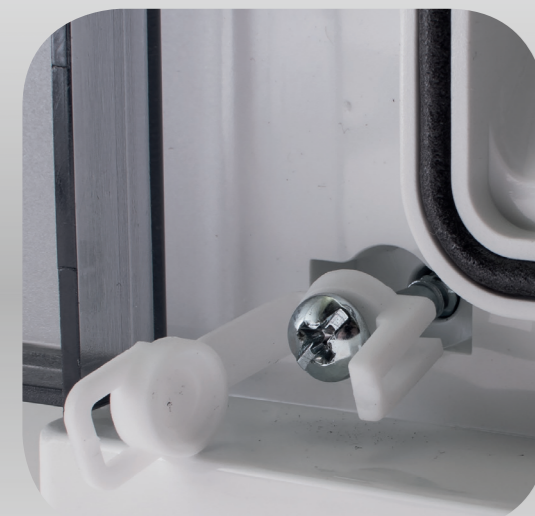
- Un: 230/400 Vca; Uni: 500V; In: 120A
- Material: PC/ABS
- Schutzart IP65
- Schlagfestigkeit: I K 0 7
- Hitze resistent bis 650°C (GWT)
- Norm: (EN 62208:2011)
- Temperaturbeständigkeit - 25°C / + 60°C



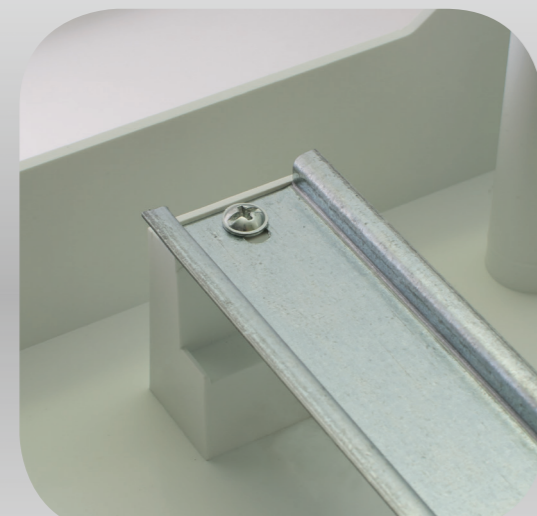
DIN rails removable separately  
Herausnehmbare Hutschiene



Symmetric reversible door panel  
Symmetrisch drehbare tuer



Cover fixing screws with plastic device for lead sealing  
Deckenschrauben mit Kunststoffkappe



Possibility of applying DIN modular devices with variable height from 68 mm to 75 mm  
Einbau von 68 und 75 mm tiefen Apparaten möglich



Version of the color : in a color of the casing (B) or in grey (S)  
Farbe: weiss (B) oder grau (S)



Side knock-outs for cables passage  
Verarbeitete kabelführungen

## Accessories Range

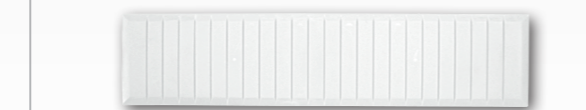
Zubehör

### Metal lock Metall Schloss

**36.80 ZRH**  
Lock with metal key for panels RH-4, RH-6, RH-8, RH-12, RH-18, RH-24, RH-36, RH-54, RH-72 enclosures  
Metall Schloss mit Schlüsseln RH-4, RH-6, RH-8, RH-12, RH-18, RH-24, RH-36, RH-54, RH-72

**36.81 ZRHP**  
Lock with metal key – repeatable, for panels RH-4, RH-6, RH-8, RH-12, RH-18, RH-24, RH-36, RH-54, RH-72 enclosures  
Metall Schloss mit gleichen Schlüsseln RH-4, RH-6, RH-8, RH-12, RH-18, RH-24, RH-36, RH-54, RH-72

### Blank Inserts Grille Module



**40.12 MMR-12**  
Masking strip for modules of distribution board with the range of 1 to 12.  
Abdeckstreifen von 1 bis 12 Modulen

### Terminal Bars N+PE- Klemme

**47.114 LZ-4**  
Terminal bar 5x1,5-16mm<sup>2</sup> In 120A Ue 230/400V for IP65 enclosure RH-4  
N+PE- Klemme 5x1,5-16mm<sup>2</sup> In 120A Ue 230/400V für IP65 RH-4

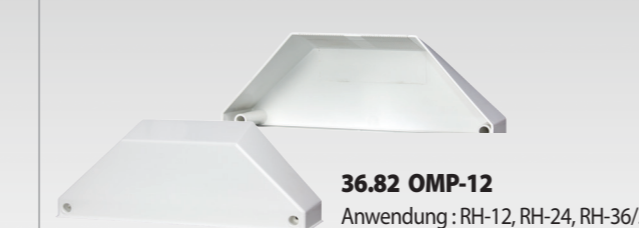
**47.116 LZ-6**  
Terminal bar 7x1,5-16mm<sup>2</sup> In 120A Ue 230/400V for IP65 enclosure RH-6  
N+PE- Klemme 7x1,5-16mm<sup>2</sup> In 120A Ue 230/400V für IP65 RH-6

**47.108 LZ-8**  
Terminal bar 9x1,5-16mm<sup>2</sup> In 120A Ue 230/400V for IP65 enclosure RH-8  
N+PE- Klemme 9x1,5-16mm<sup>2</sup> In 120A Ue 230/400V für IP65 RH-8

**47.112 LZ-12**  
Terminal bar 11x(1,5-16)mm<sup>2</sup>+2x(6-25)mm<sup>2</sup> In 120A Ue 230/400V for IP65 enclosure RH-12, RH-24 and RH-36/3  
N+PE- Klemme 11x(1,5-16)mm<sup>2</sup>+2x(6-25)mm<sup>2</sup> In 120A Ue 230/400V für IP65 RH-12, RH-24 und RH-36/3

**47.118 LZ-18**  
Terminal bar 16x(1,5-16)+3x(6-25)mm<sup>2</sup> In 120A Ue 230/400V for IP65 enclosure RH-18, RH-36/2, RH-54/3, and RH-72  
N+PE- Klemme 16x(1,5-16)+3x(6-25)mm<sup>2</sup> In 120A Ue 230/400V für IP65 RH-18, RH-36/2, RH-54/3 und RH-72/4

### „OMP“ Masking cover for distribution boards RH „OMP“ Schutz-Abdeckung für Feuchtraumverteiler IP65



Masking cover improves aesthetics of installed distribution board and protects a place of connection, against the dust and other dirt.  
Abdeckungen verbessern Verteiler Ästhetik und schützen vor Staub und Schmutz.

### PLUG FOR SEALING „ZP“ Plombe „ZP“



Plug for sealing is made of plastic. It is used to attach the seal on the bolts and screws. It protects screw head against unscrewing it before the earlier removal of the seals.  
Kunststoffplombe schützt den Schraubenkopf.



The traditional plastic lock can be replaced metal key version (Z)  
Traditionelle Kunststoffschloss kann man mit einem Metallschloss Version ersetzen



Gasket for IP65 degree or protection  
Dichtung IP65



Door panel opening up to 180°  
Türen öffnen sich um 180°



Accessories for double insulation  
Doppelsolierung Zubehör

www.elektroplast.de

